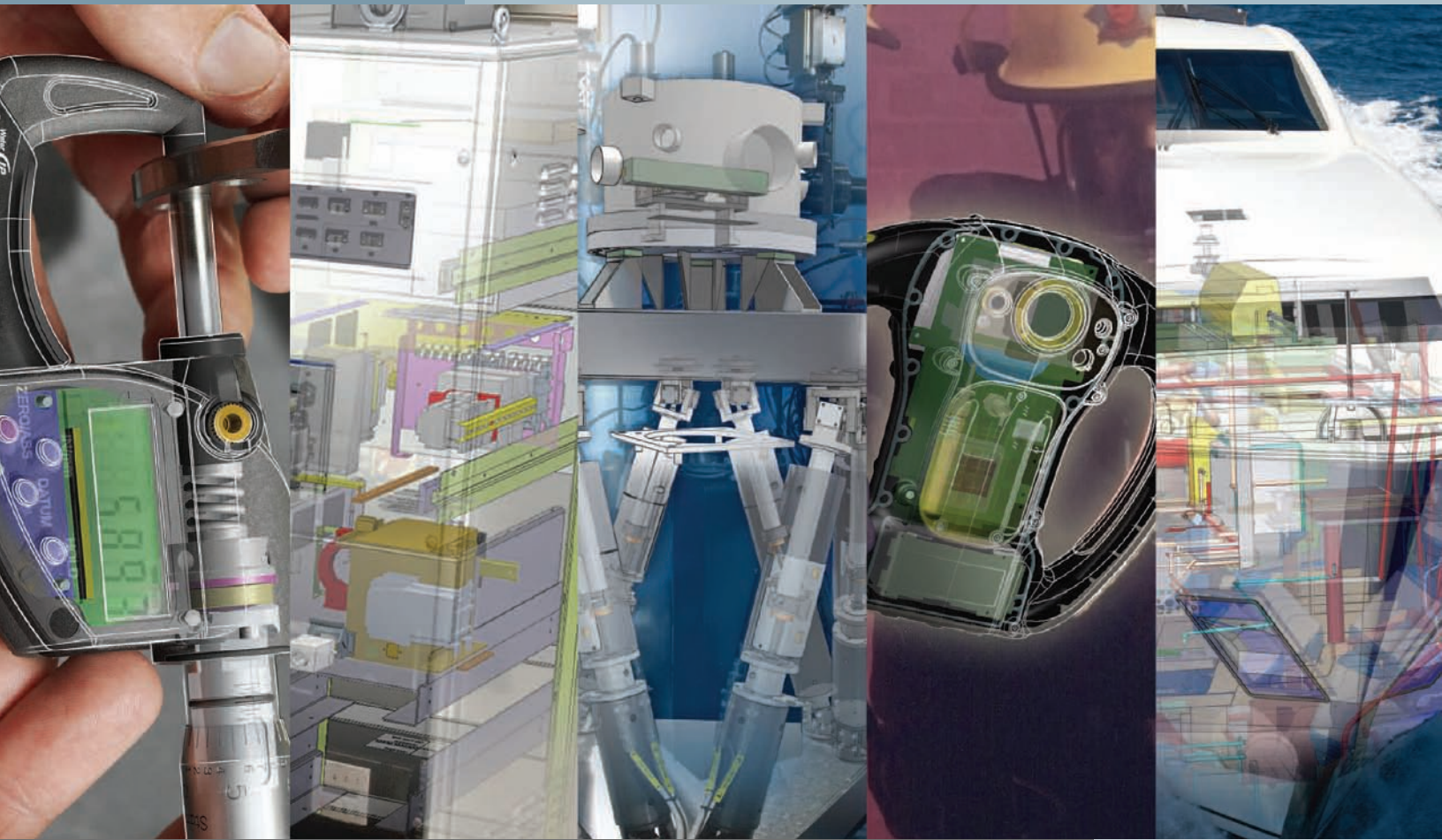


Teamcenter Express

The fast track to cPDM

Siemens PLM Software

www.siemens.com/velocity



Small and mid-size manufacturing organizations face increasing demands to deliver new products to market faster and with best-in-class quality, while making best use of their scarce resources. Teamcenter® Express software delivers a complete, easy-to-use and easy-to-deploy collaborative product data management (cPDM) solution that enables these demands to be met by providing a single source of data for design-through-manufacturing, together with highly efficient and consistent management of everyday tasks and processes.

VELOCITY SERIES

SIEMENS

Introducing Teamcenter Express

Business challenges

Today's market leaders compete on the basis of:

- Time-to-market
- Product cost
- Innovative content
- Product quality

To succeed in today's economy you have to outperform your competitors at several levels.

But how do you accomplish this when the product lifecycle for planning, designing, manufacturing and supporting your product offerings is more complex than ever?

How do you optimize your product lifecycle when your organization may include your own geographically dispersed operations, as well as the diverse operations of your suppliers, business allies and trusted customers? By improving your new product development, manufacturing planning, engineering change and collaboration capabilities.

Siemens PLM Software believes that all stages of your product lifecycle are key to the success of your product portfolio.

The early product lifecycle stages such as product design and design validation determine well over half of your development costs. Your design decisions also invariably impact the downstream stages of your product lifecycle.

To optimize these lifecycle stages, Siemens provides Teamcenter Express – the best-in-class collaborative product

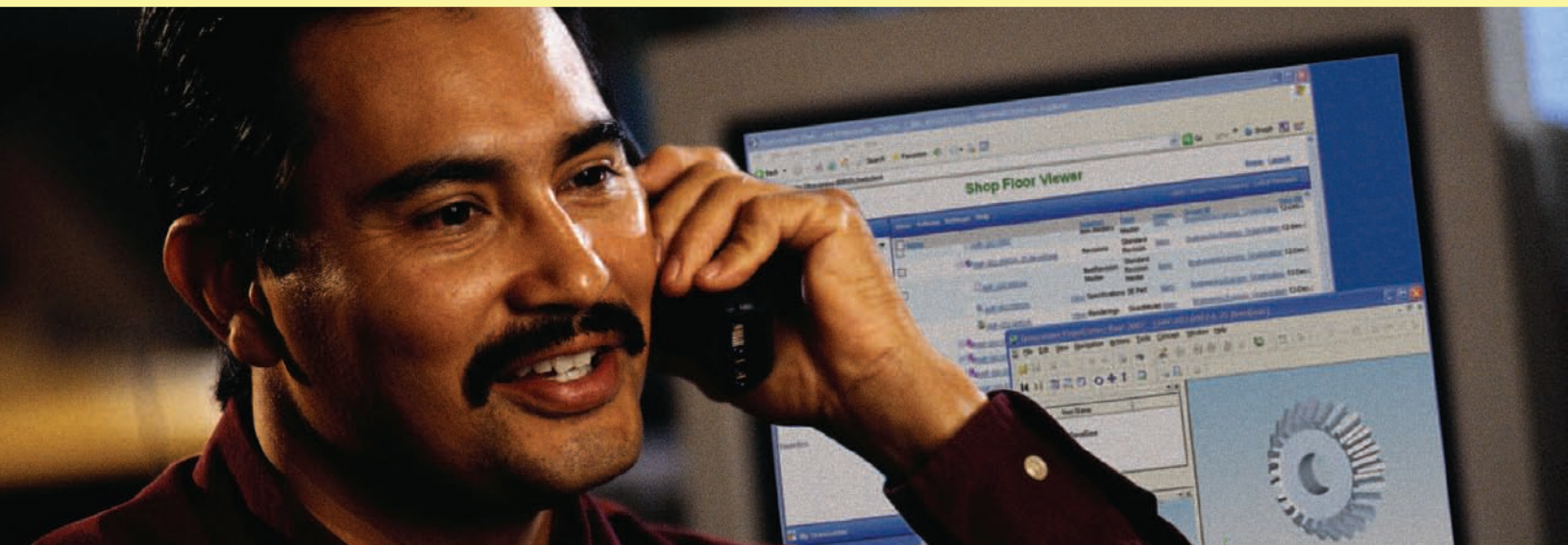
data management (cPDM) solution for management of everyday engineering tasks and processes for design-through-manufacturing.

Teamcenter Express enables you to:

- Decrease the time your engineers spend searching for data
- Implement a single source of shared data and common processes across different departments
- Provide better visibility of design data to your product development, manufacturing planning and shop floor users
- Perform design reviews with both internal staff and external customers and suppliers consistently and efficiently
- Increase your re-use of common parts and manufacturing processes
- Improve your management of multiple programs and projects
- Minimize IT support requirements and achieve low total cost of ownership

In essence Teamcenter Express enables you to transform your product development and manufacturing lifecycles from unconnected processes that are limited by isolated information silos to an integrated product lifecycle process that meets the needs of today's dynamic manufacturing environment.





► Who is Teamcenter Express designed for?

Teamcenter Express addresses the needs of small and mid-size manufacturing organizations where you:

- Are experiencing a rapid explosion of engineering data
- Need to improve the efficiency of your design, manufacturing planning and engineering change processes
- Are migrating from a 2D to a 3D CAD environment
- Use NX™ software, Solid Edge® software or non-Siemens PLM Software CAD systems including Pro/E, Catia, SolidWorks, Inventor or AutoCAD
- Need to maximize your re-use of proven components
- Need to manage multiple programs and projects and optimize engineering resources
- Need more efficient collaboration between departments and with external suppliers and customers
- Need a more reliable method for transferring data to your ERP system
- Use Microsoft Windows and associated Microsoft products for a common user environment, enabling standard support procedures to be followed
- Have limited IT and training resources
- Need a growth path for advanced capabilities – scalability with built-in data protection to allow for application and data growth
- Are concerned about the cost of implementing and maintaining a cPDM system

► What benefits can I expect from implementing Teamcenter Express?

Teamcenter Express helps small and mid-size manufacturing organizations transform their process of innovation by applying preconfigured best practices to everyday engineering tasks and processes. Organizations using Teamcenter Express benefit by:

- Reducing time spent searching for data, and ensuring the correct revision of data is used by manufacturing
- Increasing design commonality and re-use of proven components
- Consistent and efficient execution of key processes such as release to manufacturing and engineering change
- Optimizing engineering resources and identifying potential bottlenecks across multiple projects
- Automatically creating bills of materials from CAD assemblies
- Transitioning more successfully from 2D CAD to 3D CAD
- Maximizing supply chain efficiency through improved collaboration with suppliers and customers
- Reducing errors through more effective collaboration and the elimination of mistake-prone manual handoffs with manufacturing
- Managing data from multiple CAD systems in a single, integrated environment resulting in more efficient and consistent working practices
- Securing corporate design data while facilitating access by authorized personnel
- Rapidly implementing a cPDM solution that requires minimal IT resources for ongoing maintenance and delivers low total cost of ownership

Capabilities

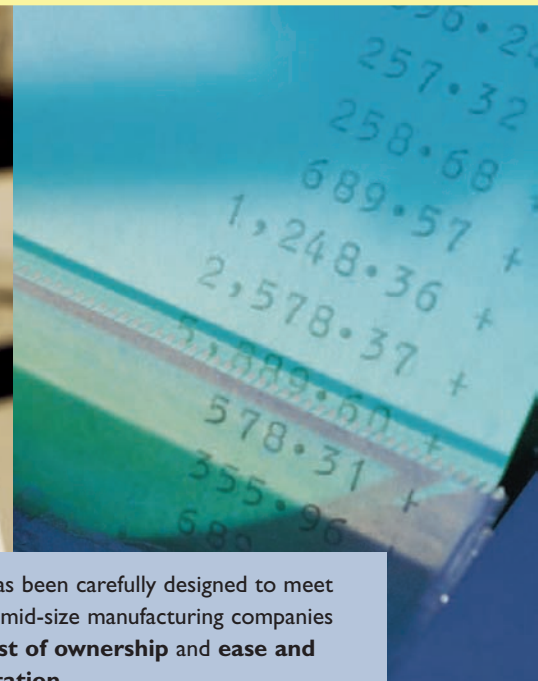
The robust capabilities of Teamcenter Express provide the functionality that your design and manufacturing teams need to maximize the efficiency of the product development, manufacturing planning and other supporting engineering processes. These capabilities enable you to deliver new and more innovative products faster than your competition and participate in supply chains, while minimizing your costs and improving the productivity of your organization.



Teamcenter Express core capabilities

Capabilities	Benefits
<i>Complete search and retrieval</i>	Enables users to quickly locate component, part and product information that appears in both graphic and textual formats
<i>Managed check-in/check-out</i>	Protects the integrity of your engineering product information by “locking out” work in progress
<i>Revision/version control</i>	Manages information changes in your dynamic environment
<i>Comprehensive Microsoft Office integration</i>	Users of Microsoft Office (Word, Excel and Outlook) have direct access to the Teamcenter Express database – best-in-class integration with the user’s desktop
<i>Friendly part/assembly configuration management</i>	Enables you to build and configure hierarchical product structures that are “intuitively” controlled
<i>Multi-CAD support</i>	Enables data from multiple CAD systems to be integrated into a single product structure that can be viewed and managed as a complete assembly
<i>Shop floor client</i>	Delivers a cost effective and easily deployed web client that enables shop floor users such as machine operators and assembly team leaders to have easy access to product data, leading ultimately to reducing errors in manufacturing
<i>Industry best-practice workflow processes</i>	Manages work in progress by leveraging best-practice industry workflows for design release and engineering change
<i>Embedded visualization</i>	Enables users to dynamically view, analyze and markup 2D and 3D virtual products and documents, including design data created in multiple CAD systems
<i>Engineering change management</i>	Enables engineering change processes to be followed more consistently and efficiently
<i>Design review support</i>	Provides a managed environment for conducting design reviews across multiple departments and with external suppliers and customers
<i>Advanced security</i>	Protects your mission-critical product information by applying best-practice access control
<i>Support for remote users</i>	Enables access to the single source of product data by remote users as well as distributed design and manufacturing teams

Low cost of ownership and rapid deployment



▶ Teamcenter Express has been carefully designed to meet the requirements that mid-size manufacturing companies have for **low total cost of ownership** and **ease and speed of implementation**.

▶ Teamcenter Express delivers low cost of ownership by means of:

- **Accelerated time-to-value from a comprehensive cPDM solution.** Key functionality required by mid-size companies such as product structure management, BOM creation and editing and workflow process management is included in Teamcenter Express and has been preconfigured to deliver rapid support for SMB use cases
- **Minimal IT resources are required for initial implementation and ongoing maintenance.** Teamcenter Express is built on Microsoft standards such as Windows Server, Vista and SQL Server
- **Fast learning curve with minimal training.** Teamcenter Express includes specially developed process-oriented training materials, including a self-paced training guide, that show users how to complete typical work processes in the most efficient manner
- **Preconfigured industry best-practice workflows.** Workflows for the key design release and engineering change order processes are preconfigured in Teamcenter Express

▶ Rapid deployment of your cPDM system is achieved through:

- **Easy software installation.** Teamcenter Express has a specially designed installation procedure that includes automatic creation of a Teamcenter Express SQL database instance preconfigured to industry best practices. The Teamcenter Express database, file vaults, web application, file translation services, full text search capability, license server and administrator client are all installed in a single session
- **Preconfigured cPDM environment.** A cPDM environment including user groups and roles and their associated access control lists, standard searches, workflow processes, standard reports, dataset types, dataset forms, BOM formats and lists of values is delivered during installation
- **Easy-to-use administration tools for customer specific configuration.** A comprehensive set of administration tools are included that enable the system administrator to configure the Teamcenter Express cPDM environment to meet customer specific requirements
- **Standard implementation packages.** A set of standard implementation packages are available that are focused on getting customers into production with cPDM quickly, training users on key use cases and achieving rapid return on investment

Additional features of Teamcenter Express

Multi-CAD support

Mid-size companies typically need to manage data in multiple CAD formats. This may include data from customers and suppliers, legacy CAD data or data from a company that was acquired and uses a different CAD system. Teamcenter Express has an excellent multi-CAD capability including integrations with the most commonly used CAD systems and the ability to integrate data from multiple CAD into a single product structure that can be viewed and managed as a complete assembly.

Microsoft Office integration

Comprehensive Microsoft Office integration enables users who create Word and Excel documents to directly access the Teamcenter Express cPDM database and to easily capture and manage their files. Users of Microsoft Outlook can view and signoff on their Teamcenter Express workflow tasks. This best-in-class integration with the users' desktop results in more consistent and efficient completion of everyday tasks and processes, greater re-use of existing data and less errors and rework.

Preconfigured industry best-practice workflows

Industry best-practice workflows for design release and engineering change orders are built in to Teamcenter Express. This enables users to quickly implement electronic design release and change processes that will significantly increase efficiency of the engineering department.

Product configuration and BOM creation

Teamcenter Express includes the Product Structure Editor module that automatically creates product structures from CAD assemblies, allows the user to manipulate the product structure and enables BOM reports to be created.

Best-in-class visualization

Teamcenter Express incorporates Teamcenter Lifecycle Visualization for best-in-class 2D and 3D document viewing, markup and analysis. Design and manufacturing teams can access all product configurations and product knowledge directly from the visualization module.

Shop floor viewer

Teamcenter Express has a targeted client module for shop floor users that facilitates the everyday search, view, measure and print type operations that these key users need to perform.

Design review support

Teamcenter Express includes unique design review capabilities that enable users to create a design review package containing documents and CAD files and send this package for review and markup by external users using the freely downloadable XpresReview tool.

Project and program management

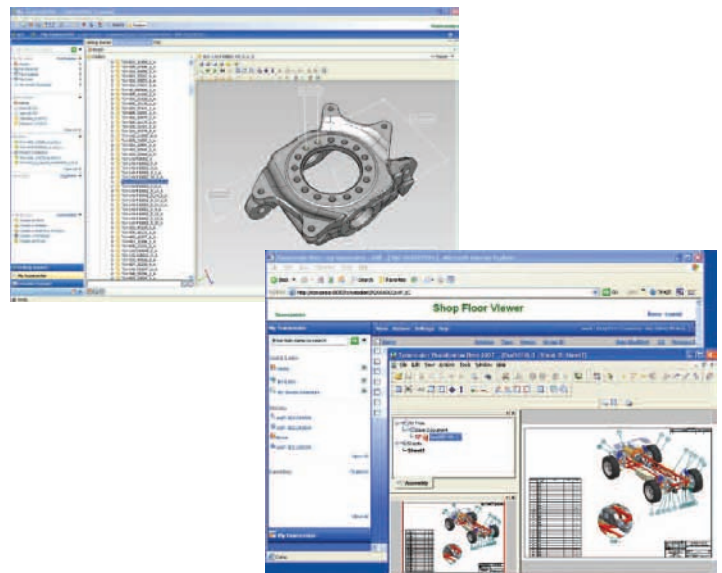
Teamcenter Express has an optional project and program management capability that is tightly integrated with the existing document management, project-based security and workflow capabilities that are a standard part of Teamcenter Express. This module delivers task and project scheduling, resource management, phase gate templates and the ability to import and export project plans to and from Microsoft Project. SMBs benefit by having accurate and timely feedback on the status of multiple projects, including the ability to identify bottlenecks, and will be able to use their limited resources more effectively.

ERP integration

Teamcenter Express has available preconfigured integrations with market-leading ERP systems. Standard workflows are used to manage the transfer of data to the ERP system. A generic ERP integration toolkit is provided enabling integrations to a wide variety of systems to be implemented with a minimum of customization.

Multi-site option

Teamcenter Express has available a proven multi-site option enabling data to be replicated between geographically dispersed sites.



The Teamcenter advantage

Teamcenter Express is a configuration of Teamcenter and a key component of the Teamcenter product line, Siemens PLM Software's comprehensive portfolio of proven digital lifecycle management solutions built on an open PLM foundation. Teamcenter is the world's most widely deployed PLM system with over 5 million licenses and is backed by Siemens' leadership in delivery. Users of Teamcenter Express can easily expand the scope of their cPDM implementation by taking advantage of Teamcenter's comprehensive portfolio of applications and its proven scalability in terms of performance and global implementation.

Teamcenter advantage

Why it matters

Market-leading platform for PLM deployments

Teamcenter is the world's market-leading platform for delivering PLM. Its marketplace success ensures your company that the promise of PLM and the ability to deliver proven results has been validated in real-world, full-production solutions.

Comprehensive portfolio of lifecycle solutions

Teamcenter delivers a portfolio of applications that can integrate your product lifecycle phases, participants and product knowledge into a collaborative environment that you can leverage to solve multiple business issues.

Leadership in delivery

Teamcenter is backed by Siemens' leadership in delivery. Siemens PLM Software has deployed Teamcenter solutions to more than 5 million users worldwide, the largest customer base of any PLM offering.

Open PLM foundation

Teamcenter solutions are delivered on an open PLM foundation that future-proofs your company's investment and facilitates vendor independence. Teamcenter's open foundation leverages widely accepted standards including Java 2 Enterprise Edition, Microsoft .NET Framework, UDDI, XML, SOAP, JSP technology and the JT file format. This open foundation allows Teamcenter to integrate your mission-critical ERP, CRM and SCM investments into your PLM environment, as well as rapidly accommodate new suppliers, partners, customers and other lifecycle participants.

For more information on the Teamcenter portfolio go to www.siemens.com/plm

Don't let the opportunity to transform your process of innovation pass you by! Contact your Siemens PLM Software sales representative or channel partner now for more information about Teamcenter Express – the world's first collaborative product development management solution optimized for the requirements of small and mid-size manufacturing organizations.

About Siemens PLM Software

Siemens PLM Software, a business unit of the Siemens Industry Automation Division, is a leading global provider of product lifecycle management (PLM) software and services with nearly six million licensed seats and 56,000 customers worldwide. Headquartered in Plano, Texas, Siemens PLM Software works collaboratively with companies to deliver open solutions that help them turn more ideas into successful products. For more information on Siemens PLM Software products and services, visit www.siemens.com/plm.

Siemens PLM Software

Americas

800 807 2200
Fax 314 264 8922

Europe

44 (0) 1202 243455
Fax 44 (0) 1202 243465

Asia-Pacific

852 2230 3308
Fax 852 2230 3210

www.siemens.com/plm

© 2009 Siemens Product Lifecycle Management Software Inc. All rights reserved. Siemens and the Siemens logo are registered trademarks of Siemens AG. Teamcenter, NX, Solid Edge, Tecnomatix, Parasolid, Femap, I-deas and Velocity Series are trademarks or registered trademarks of Siemens Product Lifecycle Management Software Inc. or its subsidiaries in the United States and in other countries. All other logos, trademarks, registered trademarks or service marks used herein are the property of their respective holders.

1603-W 22 9/09